



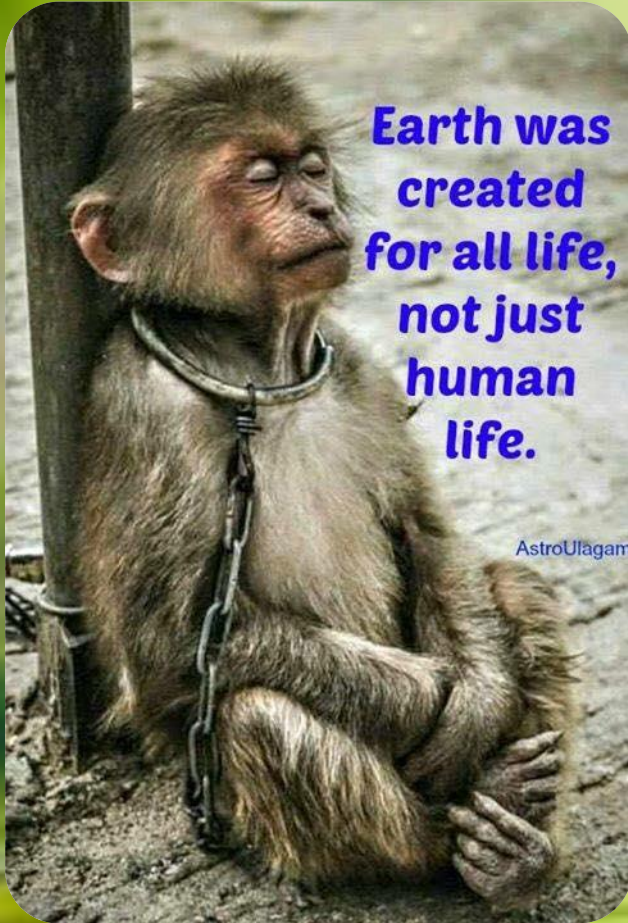
Climate Change & Creation Justice in Relation to Laudato Si

9 Sept 2023



Care for Creation

What is this Encyclical about?

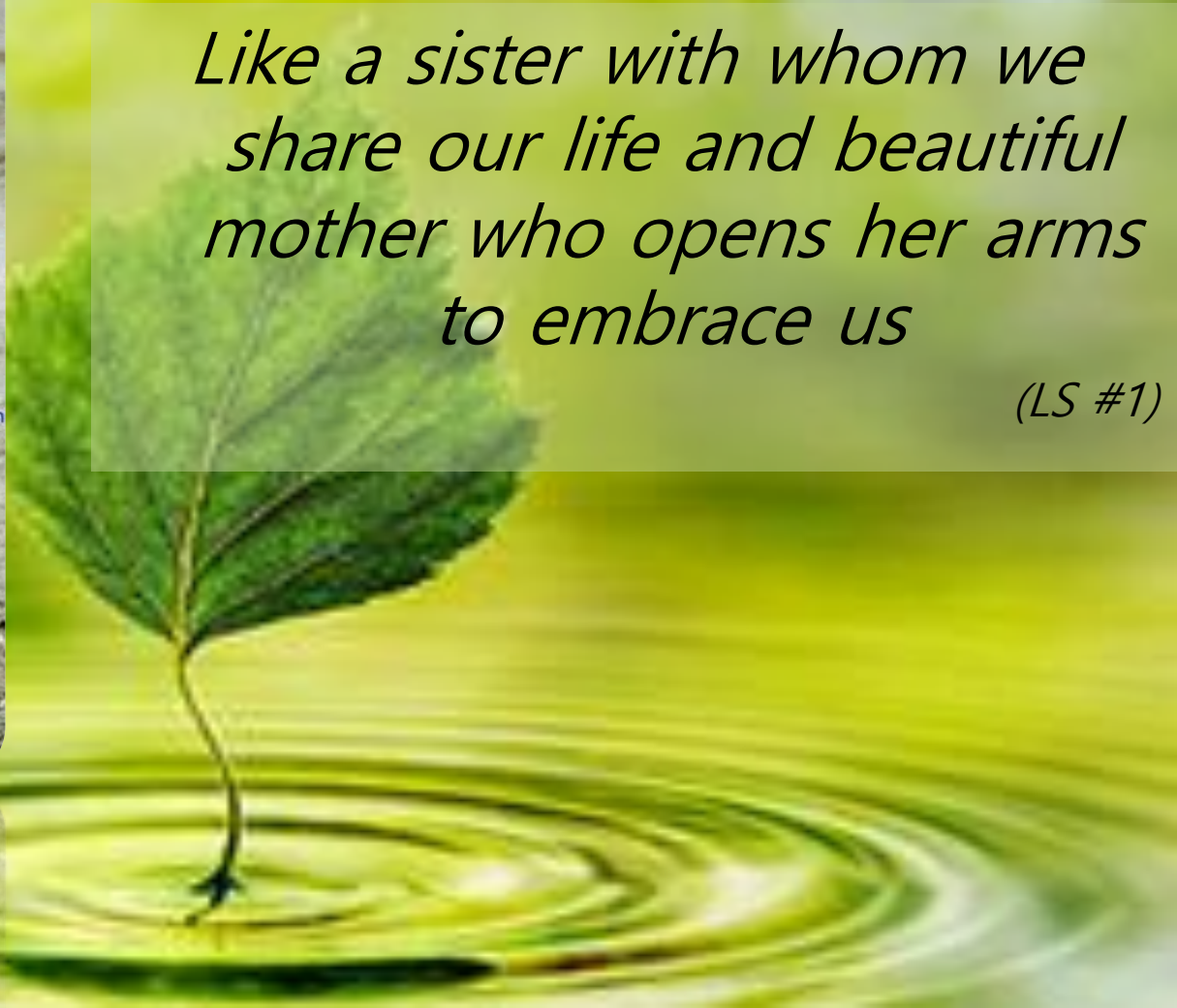


**Earth was
created
for all life,
not just
human
life.**

AstroUlagam

*Like a sister with whom we
share our life and beautiful
mother who opens her arms
to embrace us*

(LS #1)



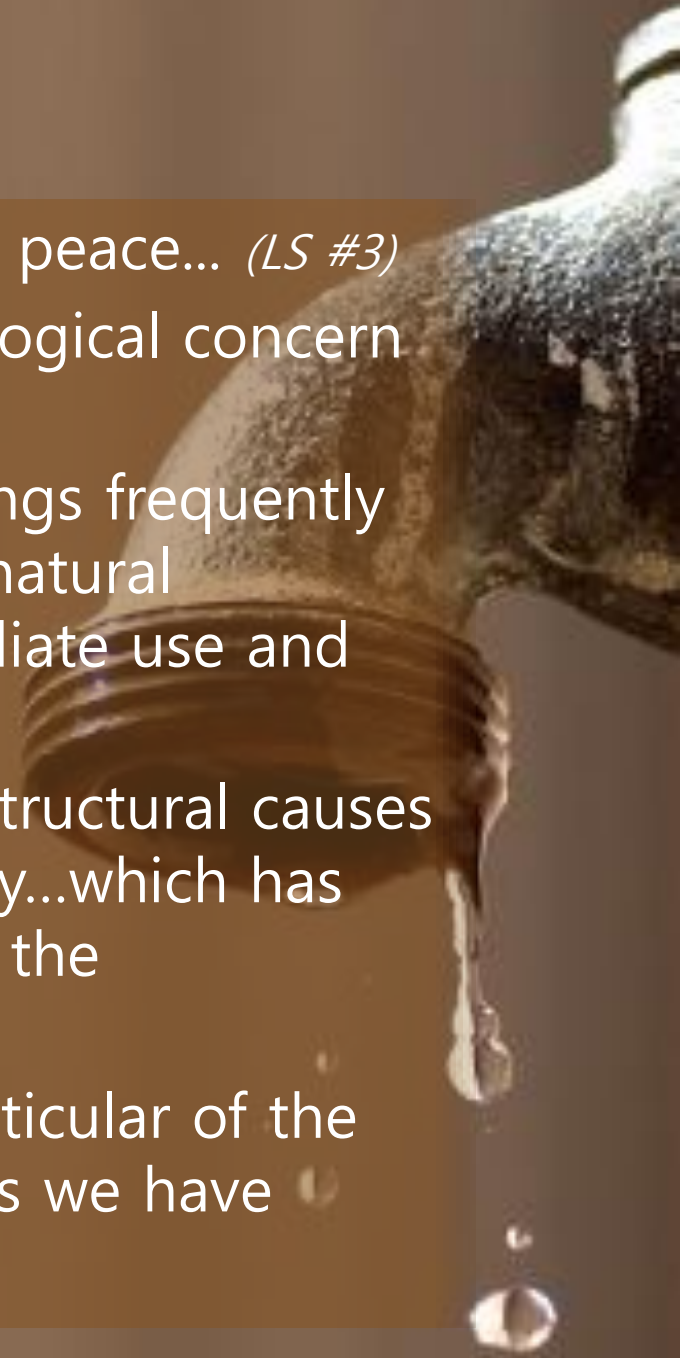
**“Together, we pledge our
commitment to raising
awareness about the
stewardship of creation.”**

- Pope Francis



Other Sources...

- **Pope St John XXIII** offered a proposal for peace... *(LS #3)*
- **Blessed Pope Paul VI** referred to the ecological concern as "a tragic consequence" *(LS #4)*
- **St John Paul II** ... warned that human beings frequently seem "to see no other meaning in their natural environment than what serves for immediate use and consumption"... *(LS #5)*
- **Benedict XVI** proposed "eliminating the structural causes of the dysfunctions of the world economy...which has proved incapable of ensuring respect for the environment" *(LS #6)*
- **Patriarch Bartholomew** has spoken in particular of the need for each of us to repent of the ways we have harmed the planet *(LS #8)*



Other Sources...



These statements of the Popes **echo** the **reflections of numerous scientists, philosophers, theologians** and **civic groups**, all of which have enriched the Church's thinking on these questions.

Outside the Catholic Church, **other Churches** and Christian communities – and **other religions** as well – have expressed **deep concern** and **offered valuable reflections** on issues which all of us find disturbing

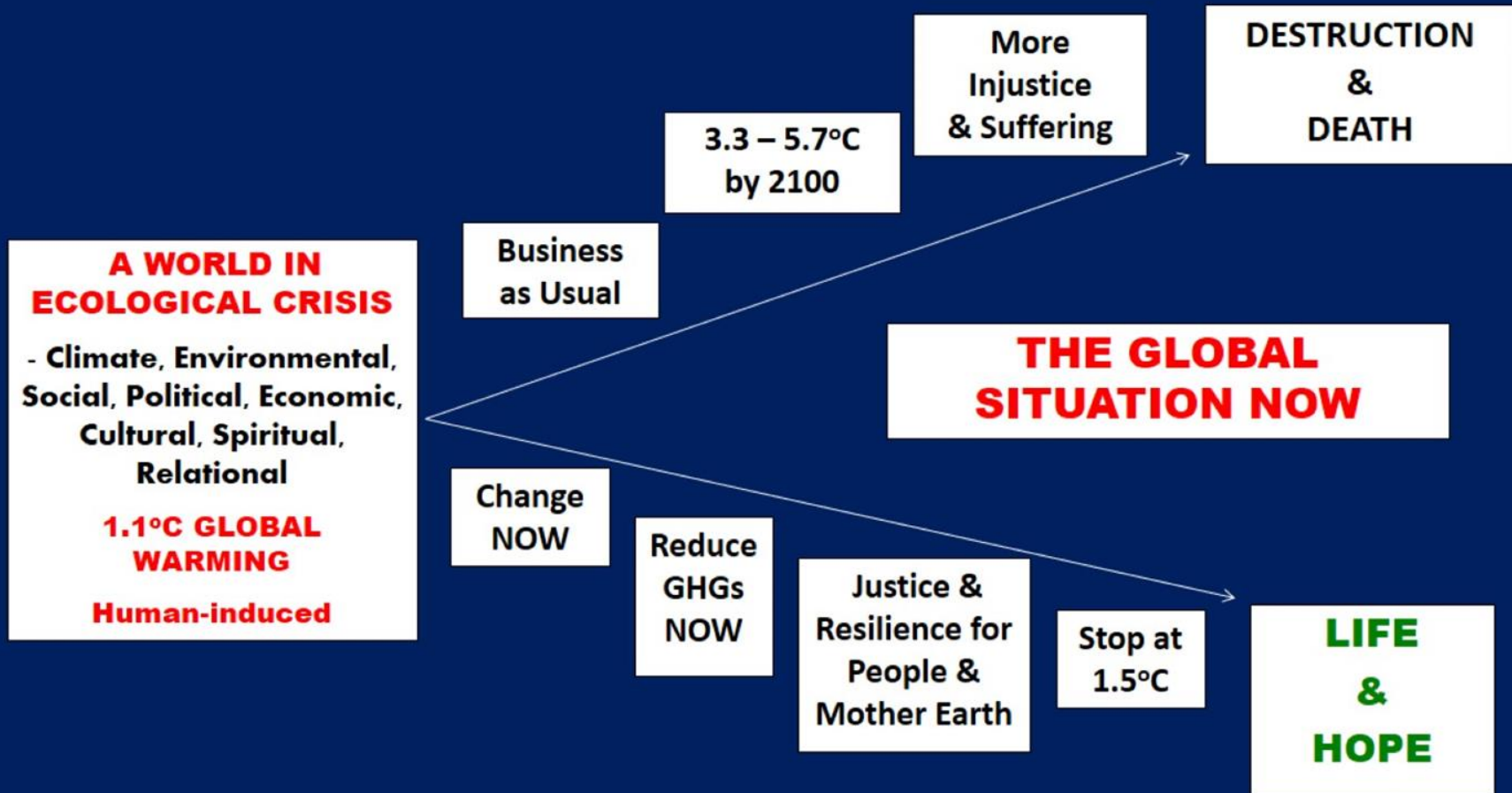
(LS #7)

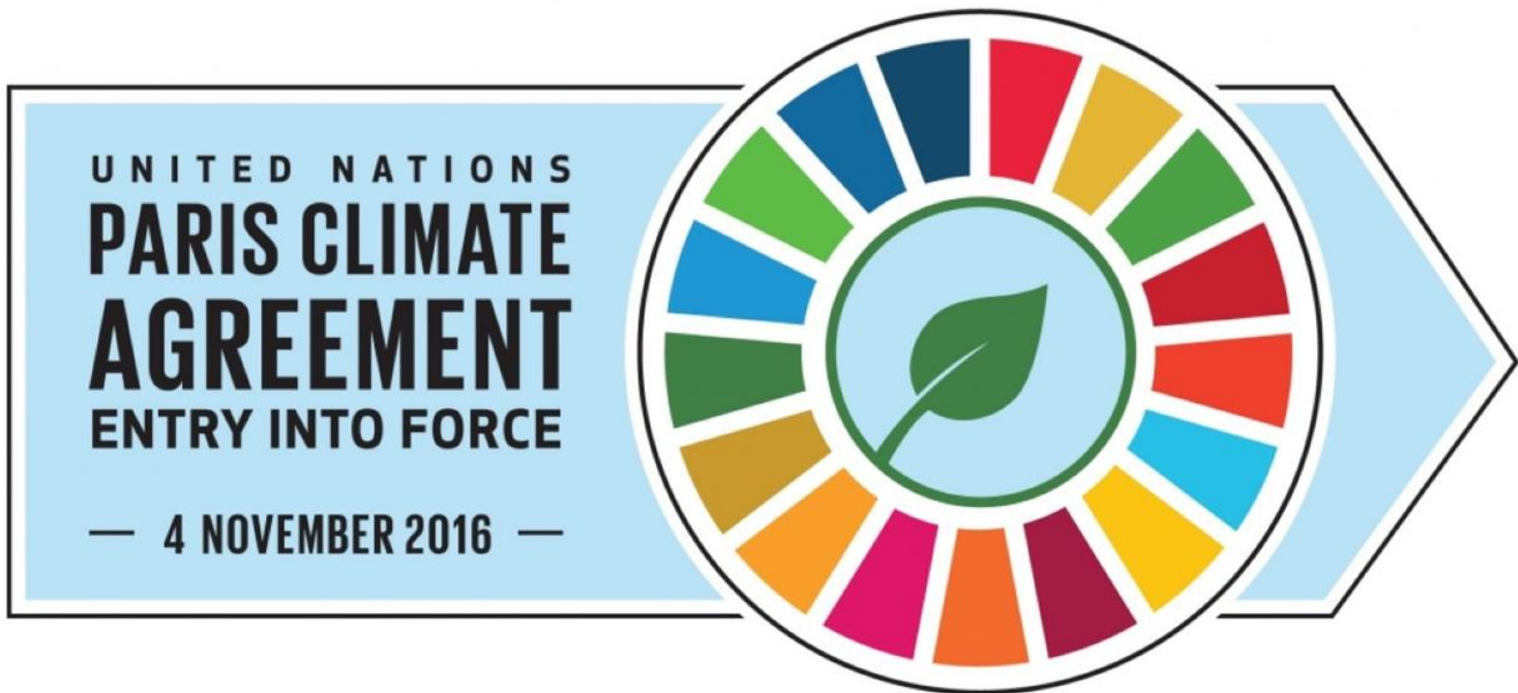
Timeline...

...**pace** of consumption, waste and environmental change has **stretched** the **planets capacity**...(that) can only **precipitate catastrophes**

(LS #161)

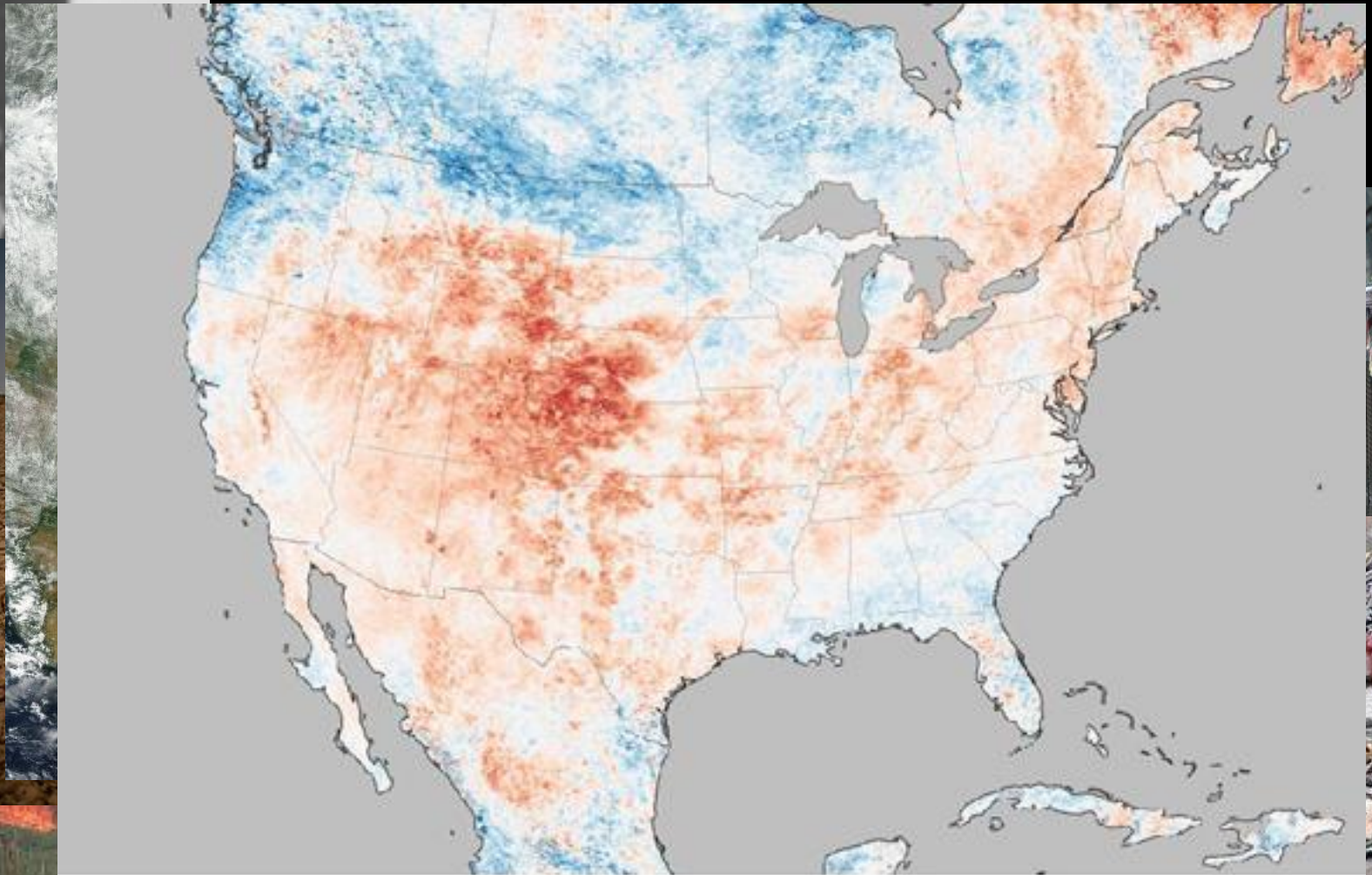






“....holding the increase in the global average temperature to well below 2°C above pre-industrial levels and pursuing efforts to limit the temperature increase to 1.5°C ”

Timeline...



Land Surface Temperature Anomaly (°C)

-12 0 12



INCREASING IMPACTS FROM 1.5°C TO 2°C

POPULATION EXPOSED TO WATER SCARCITY



EXTREME HOT DAYS



EXTREME COLD NIGHTS



POPULATION EXPOSED TO FLOODS



POPULATION EXPOSED TO DROUGHT



POPULATION EXPOSED TO SEA LEVEL RISE WITHOUT ADAPTATION



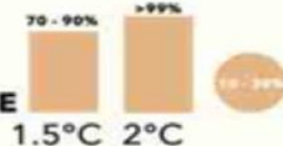
SEA LEVEL RISE



ARCTIC FREE OF SEA ICE IN SUMMER



CORAL DECLINE



Species Loss (Plants)



Species Loss (Vertebrates)



DECLINE IN FISHERIES

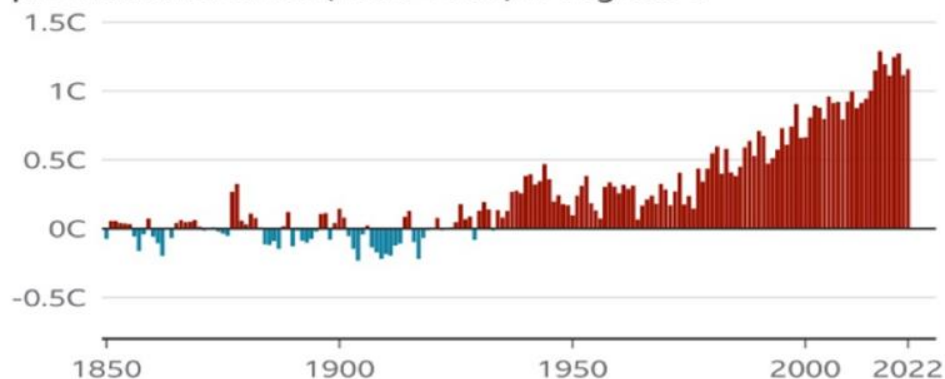


POPULATION EXPOSED TO SEVERE HEAT WAVES



The world has been getting warmer

Change in annual average global temperature from pre-industrial levels (1850-1900) in degrees C



Note: Average calculated from HadCRUT5, NOAA GlobalTemp, GISTEMP, ERA5, JRA-55 and Berkeley Earth climate datasets

Source: Met Office

BBC

There is a 66% chance that the annual average global temperature will temporarily be more than 1.5°C above pre-industrial levels in at least one of the next five years

The annual mean global near-surface temperature for each year between 2023 and 2027 is predicted to be between 1.1°C and 1.8°C GCW



Met Office



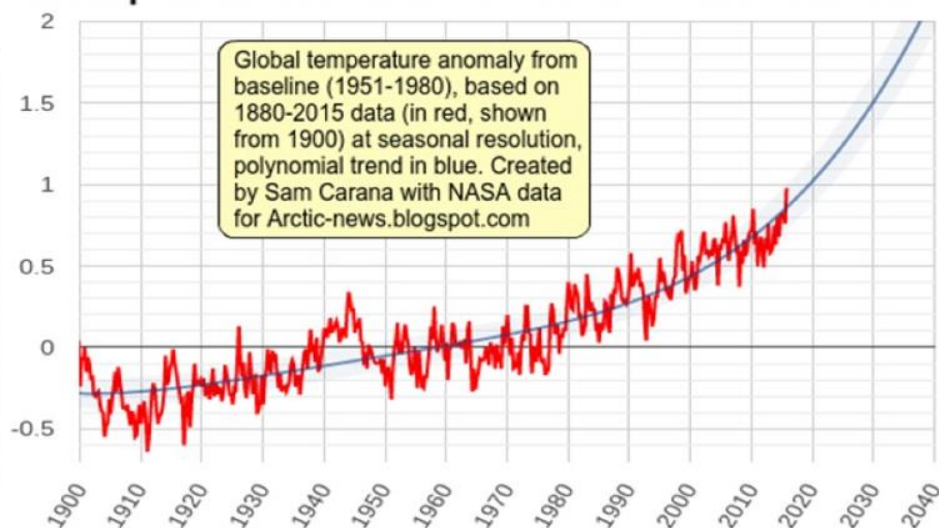
WMO Global Annual to Decadal Climate Update

“ For the first time in recorded history we are on the cusp of seeing annual global temperature exceed 1.5°C above pre-industrial levels. ”

Professor Adam Scaife

Head of long range prediction at Met Office

A temperature rise of 1.5°C could be reached in 2024



AR6 WG2: An atlas of human suffering: adverse impacts that will greatly impact the Global South especially



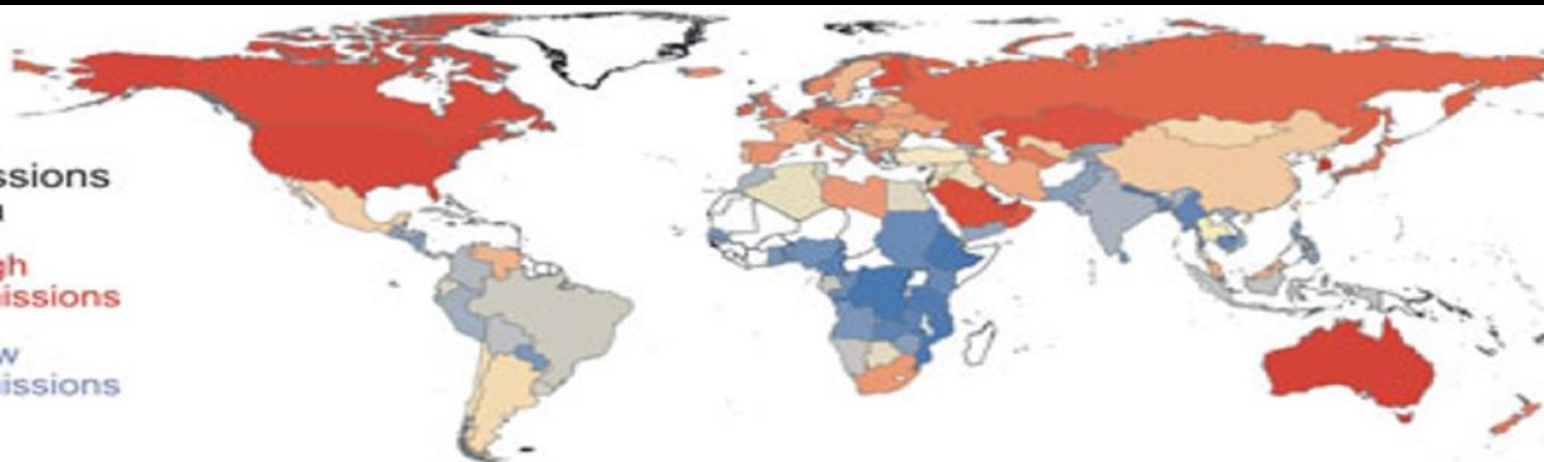
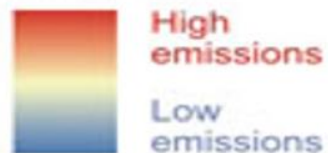
- Our world is getting **hotter, sicker, hungrier, more miserable and more dangerous** to live in. **3.3 – 3.6 bil. live in areas highly vulnerable to CC.**
- **Health impacts:** increase in diseases such as food-, water-, and vector-borne diseases; anxiety, depression and acute stress; air pollution; malnutrition and disease susceptibility in low- and middle-income countries.
- CC limits the functioning of **critical infrastructure** eg transportation, water, sanitation and energy systems
- *For every degree of warming, the global risk of involuntary displacement due to flooding will increase by 50%.*
- Climate extremes tend to increase **violent conflict due to reduced food and water security, & loss of income and livelihoods.** These conflicts are also associated with increased **violence against women, girls and vulnerable groups.**

Typhoon Haiyan
Philippines 2013



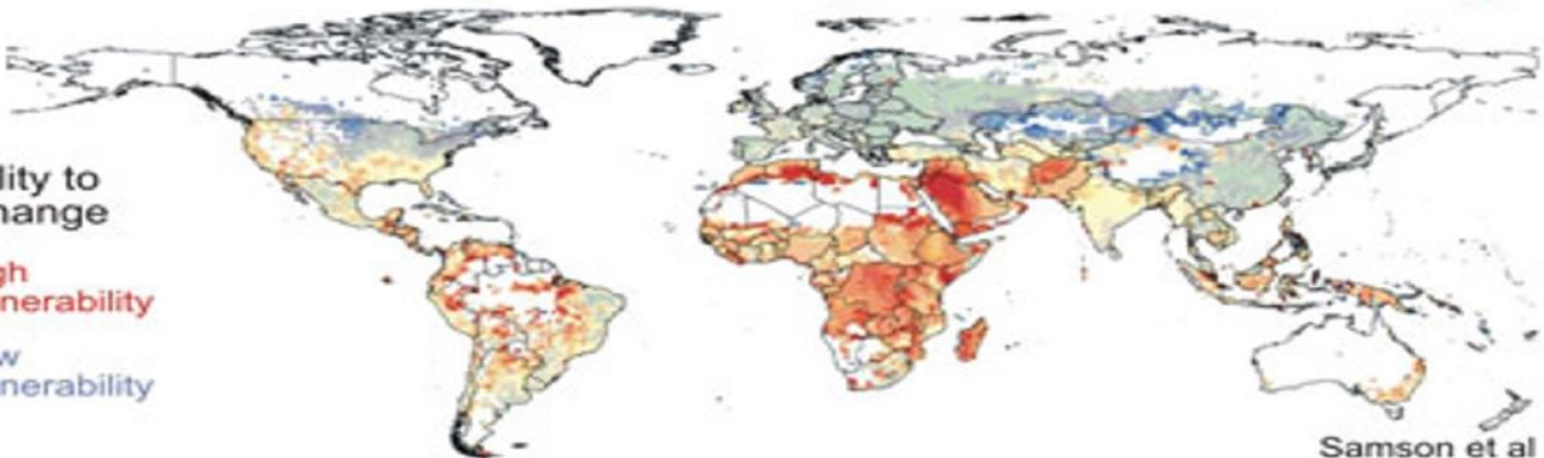
GCW

CO2 emissions
per capita



Those who contribute the least greenhouse gases
will be most impacted by climate change

Vulnerability to
climate change



GCW

Samson et al 2011

Inequality and CO₂ emissions

Share of cumulative CO₂ emissions for different revenue brackets from 1990 to 2015

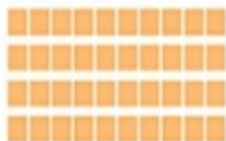
SHARE OF GLOBAL POPULATION

10% wealthy

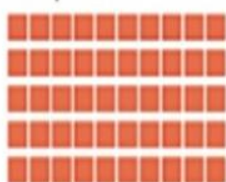
1% very rich



40% middle income



50% poor



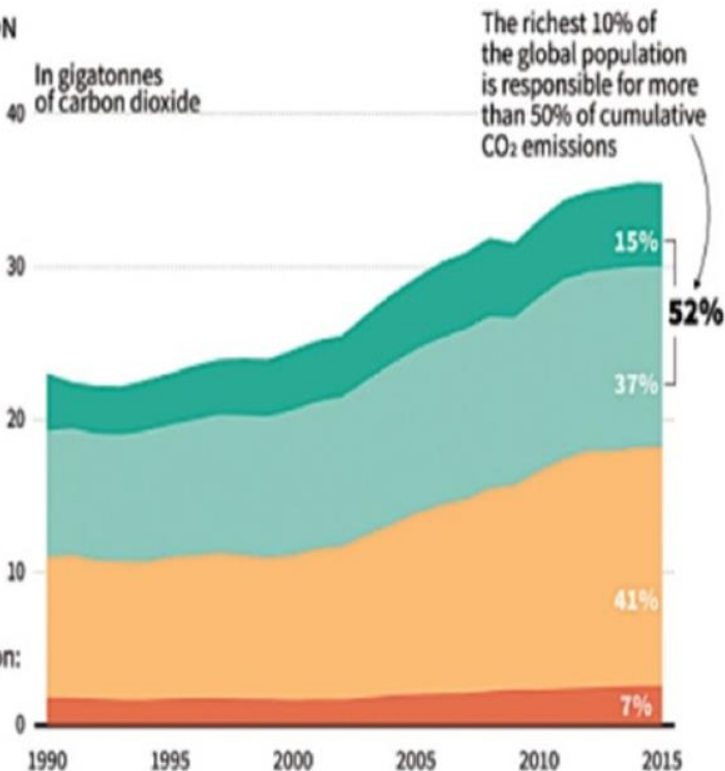
Annual income threshold per person:

Richest 1%: \$109,000

Wealthiest 10%: \$38,000

Middle income: \$6,000

Poorest 50%: less than \$6,000

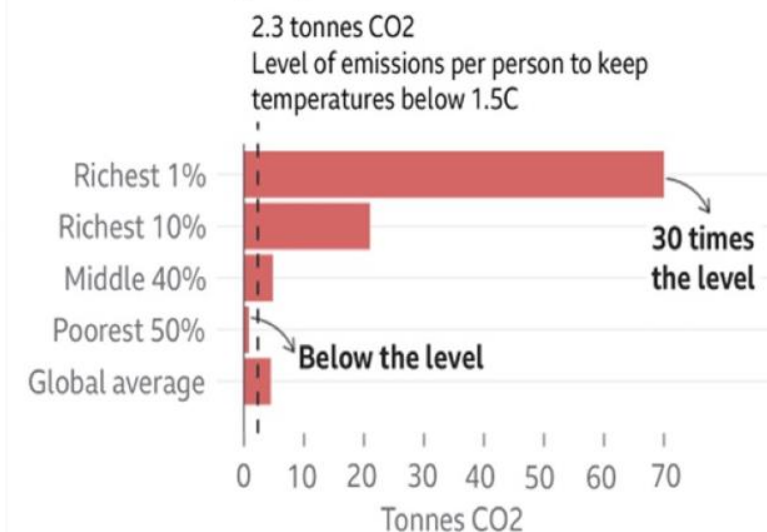


Source: Oxfam



Amount of CO₂ we're on track to emit by 2030

Predicted average emissions per person, based on income group



Note: 2030 predictions based on current national emissions reductions policies and pledges

Source: IEEP, Oxfam and SEI



GCW

Target Audience & Goal...

Now, faced as we are with global **environmental deterioration**, I wish to address **every person living** on this planet. In my Apostolic Exhortation *Evangelii Gaudium*, I wrote to all the members of the Church with the aim of encouraging ongoing missionary renewal. In this Encyclical, I would like to **enter into dialogue with all people** about our common home

(LS #3)





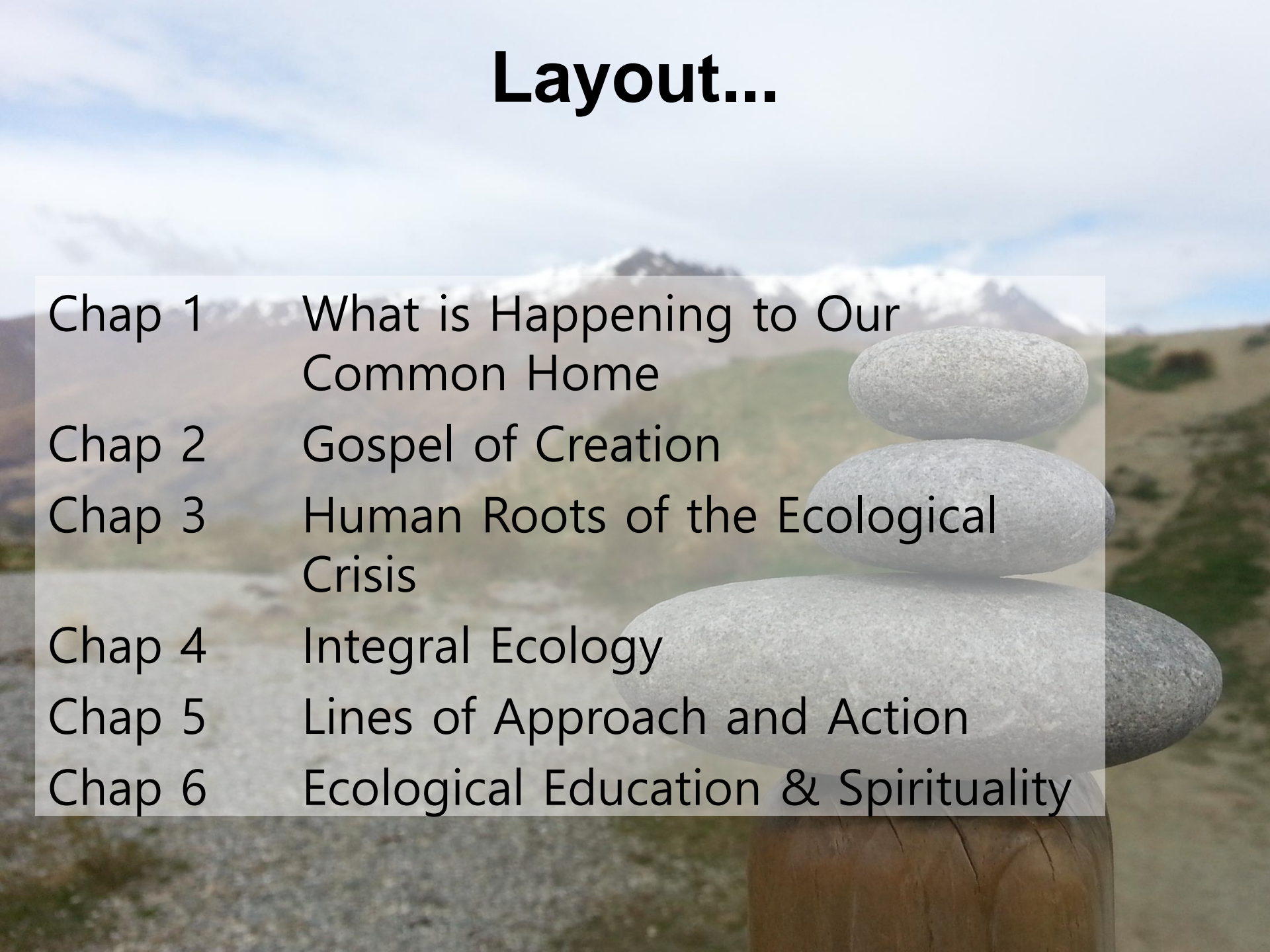
...the ecological crisis is also a summons to
profound **interior conversion**

(LS #217)

There can be no **renewal of our relationship** with
nature without a renewal of humanity itself

(LS #118)

Layout...

- 
- Chap 1 What is Happening to Our Common Home
 - Chap 2 Gospel of Creation
 - Chap 3 Human Roots of the Ecological Crisis
 - Chap 4 Integral Ecology
 - Chap 5 Lines of Approach and Action
 - Chap 6 Ecological Education & Spirituality

Themes...

- Intimate relationship
- Critique of new paradigms
- Value proper to each creature
- Fortright and honest debate
- Throw away culture
- "New Lifestyle"



Intimate Relationship

“The human environment and the natural environment **deteriorate together**; we cannot adequately combat environmental degradation unless we attend to causes related to human & social degradation.

In fact, the deterioration of the environment and society **affects the most vulnerable** people on the planet....

the gravest effects of all attacks on the environment are **suffered by the poorest**”



Value Proper to Each Creature



"A spirituality which forgets God as All-powerful and Creator is not acceptable."

That is how we end up worshipping earthly powers, or ourselves usurping the place of God, even to the point of claiming an unlimited right to trample His creation underfoot"

(LS #75)

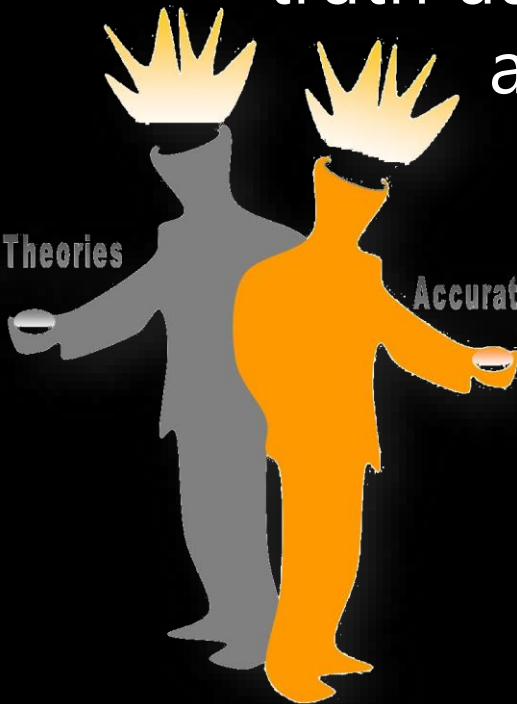
Critique of New Paradigms

"There is a **tendency to believe** that every **increase in power means 'an increase of 'progress''** itself, ... as if reality, goodness and truth automatically flow from technological and economic power as such"

(LS #105)

False Theories

Accurate Speculations



Technology solving real life problems



According to St Teresa of Avila...



Our body has this defect that, the more it is provided care and comforts, the more needs and desires it finds.

— *Saint Teresa of Avila* —

AZ QUOTES

In other words,
WHO DOESN'T LOVE
CONVENIENCE?

Examples



Throw-Away Culture



"When human beings place themselves at the centre, they give absolute priority to immediate convenience and all else becomes relative...."

Sees everything as irrelevant unless it serves one's own immediate interests"

(LS #122)

Me FIRST!



Throw-Away Culture



""Seedbed for collective selfishness'...self-centered and self-enclosed, their greed increases.

The emptier a person's heart is, the more he or she needs things to buy, own and consume ...genuine sense of the common good also disappears"

(LS #204)

Unless we know the very thing that's causing our carelessness and indifference, no amount of campaigns will bring about any sustainable change.

Pope Francis talks about







It means being **mindful** that we are interconnected, that there is kinship with others and all of Creation. It is about being **self-forgetful** of our immediate wants and desires.

THANK YOU